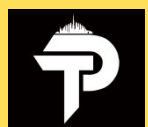


Dubai, UAE

SOBHA ELWOOD

In

Dubailand



By TESLA PROPERTIES

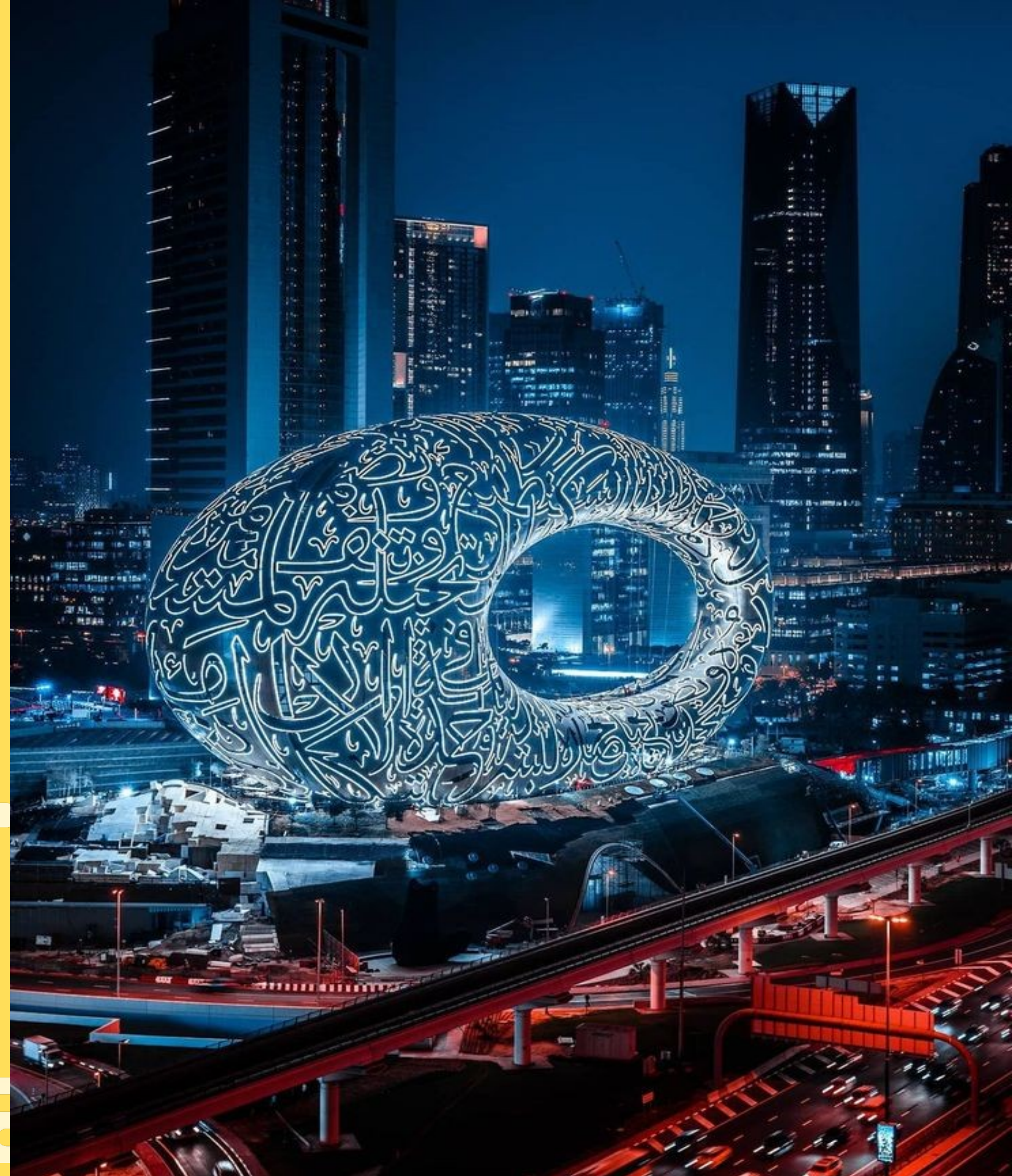




Table of Contents

- 01 • About Us
- 02 • SOBHA ELWOOD
- 03 • SOBHA ELWOOD Summary
- 04 • Feature & Amenities
- 05 • Payment Plan
- 06 • Image Gallery
- 07 • Contact Details

About Us

Tesla Properties, a leading **Dubai Real Estate Investment Company**, offers a vast portfolio of properties for rent and sale in the city's most sought-after locations.

Whether you're looking for [Top Apartments for Rent in Dubai](#) or a long-term investment opportunity, Tesla Properties has you covered, with a wide range of offerings including off-plan apartments, villas, penthouses, and townhouses from the city's most prestigious developers.

At **TESLA PROPERTIES**, we understand that **real estate transactions** are not just about **buying properties**; they're about **fulfilling dreams, achieving goals, and creating lasting value**.

Our portfolio includes exclusive **off-plan projects** from **esteemed developers**, providing unique **investment opportunities** in **Dubai's thriving market**. With a commitment to **exceptional service and deep market expertise**, Tesla Properties guides clients through every step, from finding ideal properties to making strategic investments.

Trust us to help you achieve your real estate goals in Dubai.



SOBHA ELWOOD

Sobha Elwood is an ambitious residential project by the prestigious Sobha Realty, nestled in the scenic landscapes of Dubailand. This visionary development features an exclusive collection of 4, 5, and 6-bedroom villas, each meticulously crafted to deliver a premium living experience. Surrounded by lush greenery, Sobha Elwood redefines luxury by blending elegant design with a serene natural environment, making it a perfect haven for families seeking sophistication and comfort. Sobha Elwood stands out for its commitment to blending luxury with a nurturing environment, making it an ideal choice for families seeking both elegance and convenience.

Embodying the ethos of 'The Canvas of Nature,' Sobha Elwood offers residences that are masterpieces of design, seamlessly harmonizing with their verdant surroundings. Residents can indulge in a wealth of world-class amenities tailored for both relaxation and recreation. From a sports café within the community to eco-friendly conveniences like EV charging stations, every detail is thoughtfully curated to enhance modern living. The development prioritizes sustainability without compromising on luxury. The development is thoughtfully planned to include dedicated play areas, an on-site school, a clinic, and a daycare, ensuring that all aspects of family life are well catered to.

With over 10,000 trees gracing the community, Sobha Elwood stands as a testament to green living. An impressive 47% of the development is dedicated to open spaces, creating a breathable, tranquil environment. These expansive green areas are not just for aesthetics but also foster a deeper connection with nature, offering residents a peaceful retreat from the bustling city life.

The community boasts seven beautifully designed themed parks, each inspired by world-renowned forests. These enchanting green spaces provide residents with serene spots for relaxation as well as vibrant areas for outdoor activities. Whether it's a quiet stroll through lush pathways or an energetic play session in the parks, Sobha Elwood caters to every lifestyle need, ensuring a balanced and fulfilling living experience.

Sobha Elwood is more than just a residential project—it's a lifestyle destination that marries luxury with sustainability. Ideal for discerning homeowners, it offers a unique blend of elegance, convenience, and nature-inspired living. With its unparalleled amenities, breathtaking landscapes, and commitment to green spaces, Sobha Elwood sets a new benchmark for premium living in Dubai.

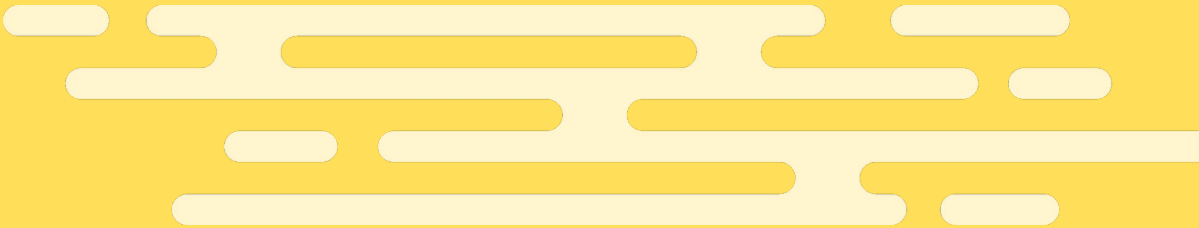




SOBHA ELWOOD

Summary

Price	Starting From AED 7,930,000
Developer	Sobha Realty
Location	Dubailand
Property Type	Villas
Unit Type	4, 5 & 6 Bedroom
Size	4958 to 7,186 Sq. Ft.
Status	Under Construction
Completion Date	June, 2027



Feature & Amenities

- **Parking**
- **24/7 Security**
- **CCTV**
- **Balcony**
- **Gym**
- **Swimming Pool**
- **Pool Deck**
- **Kid's Play Area**
- **Kid's Pool**
- **Lush Greenery**
- **Parks**
- **Cycling Tracks**
- **Club Houses**
- **Wellness Zone**
- **EV Parking**
- **Private Pool**
- **Garden**
- **Sports Court**
- **The Valley Lagoon**
- **Picnic Patch**





Payment Plan

On Booking	20%
During Construction	40%
On Handover	40%

Image Gallery

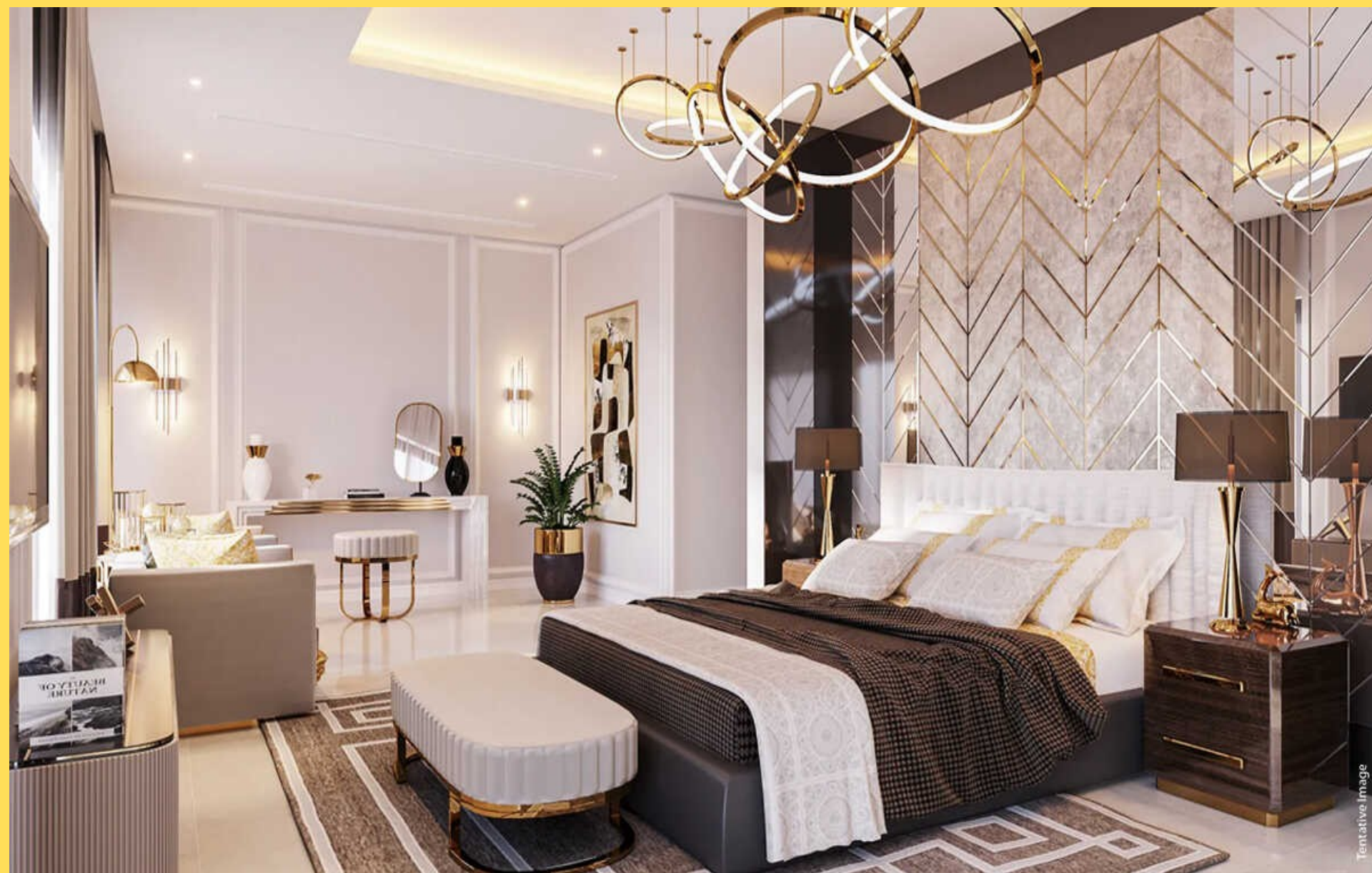


Image Gallery

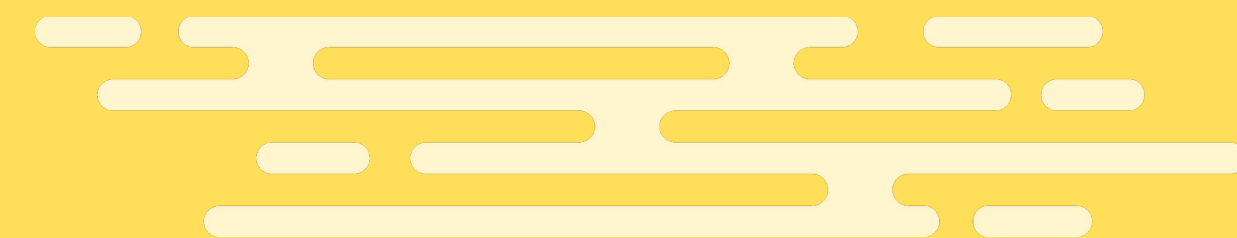


Image Gallery



Image Gallery

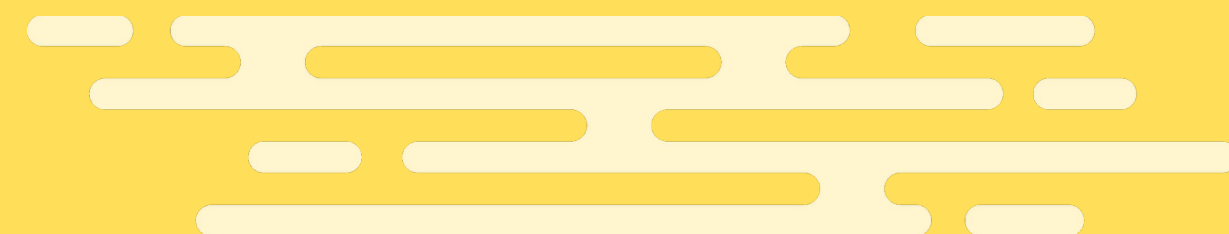


Image Gallery

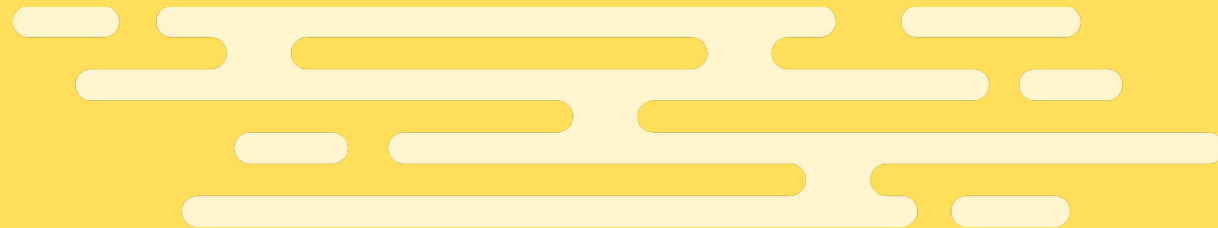
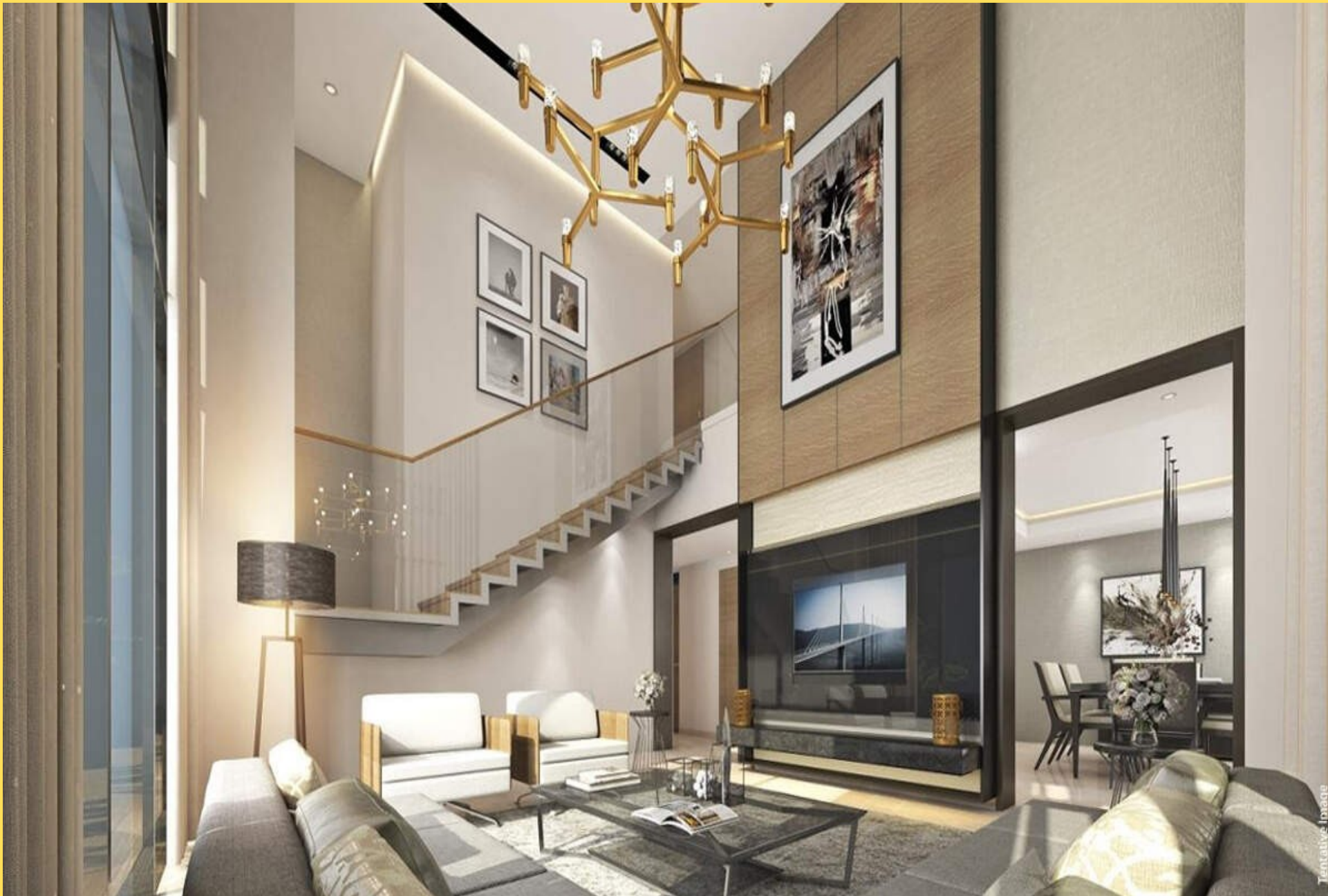
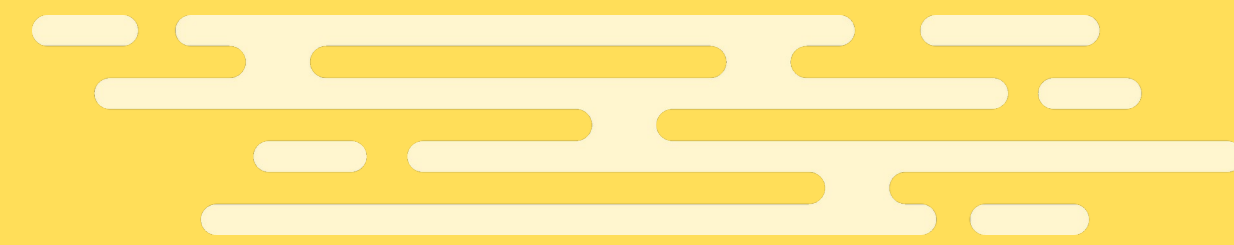
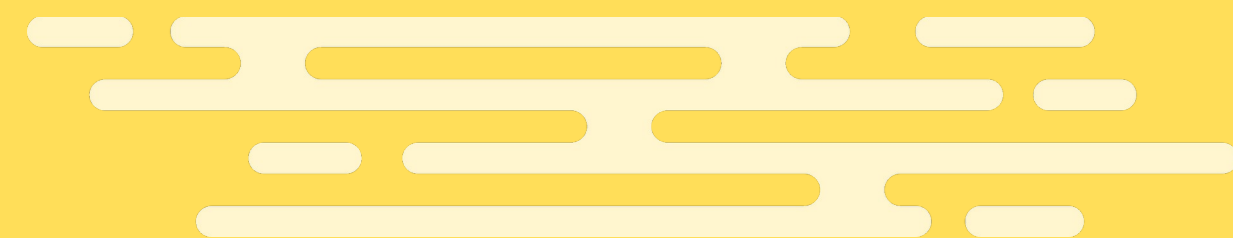


Image Gallery



Contact Details

Tesla Properties is dedicated to offering exceptional real estate solutions tailored to the diverse needs of its clientele. With a focus on providing properties in the most sought-after locations in Dubai, Tesla Properties simplifies the process of finding [buy property in Dubai](https://teslaproperties.ae/) or Property Investments In Dubai.

Contact us today to schedule a consultation and discover how we can help you achieve your property goals.



<https://teslaproperties.ae/>



info@teslaproperties.ae



+971502779265



I Rise Tower - 21E 01 - 02 Hessa St
- Barsha Heights - Dubai

